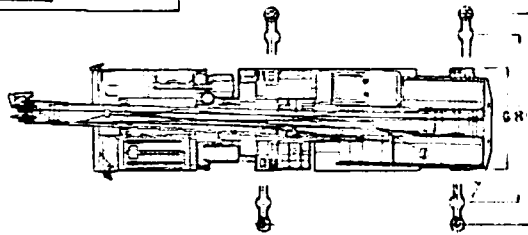
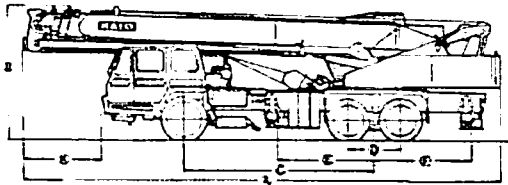
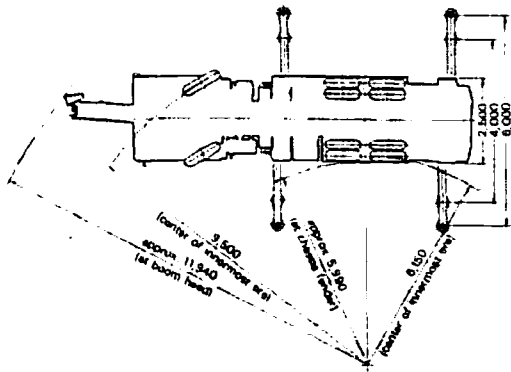


# Kato NK-250E-III

## Dimensions

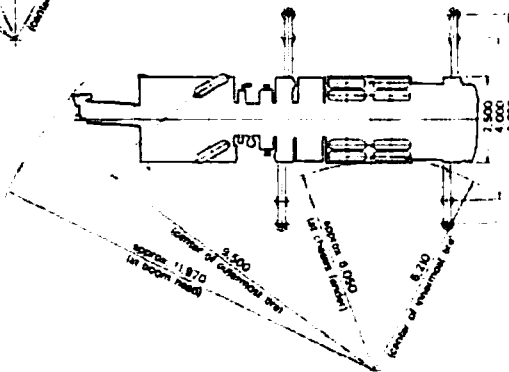


**25**  
Tonne  
Truck Mounted  
Cranes



Mitsubishi K203LA

Nissan Diesel KW30MXL



### Hookblock

Capacity	25	3
Weight	0.22	0.06

Carrier name and model	A	B	C	D	E	F	G	H	I	J	K
Mitsubishi K203BLA	11,930	3,300	4,700	1,300	2,400	2,200	2,500	4,000	6,000	3,215	2,100
Nissan Diesel KW30MXL	11,930	3,300	4,600	1,300	2,450	2,450	2,500	4,000	6,000	3,215	1,950

(Unit: mm)

# Kato NK-250E-III

## Main Boom Duties



Working Radius (m)	With fully extended outriggers - over side and over rear						
	10m Boom	13.5m Boom	17m Boom	20.5m Boom	24m Boom	27.5m Boom	31m Boom
2.5	25.00	17.50	14.50				
3.0	25.00	17.50	14.50	9.50			
3.5	20.60	17.50	14.50	9.50	7.50		
4.0	18.00	17.50	14.50	9.50	7.50	6.50	
4.5	16.30	15.80	14.50	9.50	7.50	6.50	
5.0	14.85	14.40	13.25	9.50	7.50	6.50	6.00
5.5	13.65	13.25	12.20	9.50	7.50	6.50	6.00
6.0	12.30	12.20	11.30	9.50	7.50	6.50	6.00
6.5	11.20	11.00	10.50	9.50	7.50	6.50	6.00
7.0	10.25	10.00	9.80	8.80	7.50	6.50	6.00
7.5	9.40	9.20	9.10	8.30	7.50	6.50	6.00
8.0	8.65	8.45	8.35	7.80	7.00	6.10	5.65
8.3	8.25	8.05	7.95	7.50	6.75	5.90	5.45
9.0		7.20	7.10	6.95	6.25	5.45	5.05
9.5		6.65	6.50	6.55	5.90	5.20	4.80
10.0		6.00	5.90	6.20	5.60	4.95	4.60
11.0		5.00	4.85	5.25	5.00	4.50	4.20
11.8		4.30	4.20	4.60	4.65	4.15	3.95
12.0			4.10	4.45	4.60	4.10	3.90
14.0			2.90	3.25	3.40	3.50	3.35
15.3			2.30	2.70	2.85	3.00	3.00
16.0				2.40	2.60	2.75	2.85
18.0				1.75	1.95	2.10	2.15
18.8				1.50	1.75	1.90	1.95
20.0					1.45	1.60	1.70
22.0					1.10	1.20	1.30
22.3					1.00	1.15	1.25
24.0						0.90	0.95
25.8						0.65	0.75
28.0							0.50
29.3							0.40

# Kato NK-250E-III

## Main Boom Duties

Working Radius (m)	With intermediately extended outriggers - 360° full range						
	With fully extended outriggers - over front						
	10m Boom	13.5m Boom	17m Boom	20.5m Boom	24m Boom	27.5m Boom	31m Boom
2.5	20.00	17.50	14.50				
3.0	20.00	17.50	14.50	9.50			
3.5	20.00	17.50	14.50	9.50	7.50		
4.0	16.50	17.50	14.50	9.50	7.50	6.50	
4.3	14.40	14.85	14.50	9.50	7.50	6.50	
5.0	10.50	10.50	10.20	9.50	7.50	6.50	6.00
5.7	7.90	7.80	7.60	7.40	7.50	6.50	6.00
6.0	7.10	7.00	6.80	6.80	7.00	6.50	6.00
6.5	6.00	5.90	5.65	5.85	6.15	6.50	6.00
6.6	5.85	5.70	5.45	5.70	6.00	6.30	6.00
7.0	5.20	5.00	4.80	5.10	5.35	5.60	5.50
8.3	3.60	3.40	3.20	3.60	3.38	4.00	4.10
9.0		2.80	2.65	3.00	3.25	3.40	3.50
10.0		2.10	1.95	2.30	2.55	2.75	2.80
11.0		1.50	1.35	1.75	2.00	2.20	2.30
11.8		1.15	1.05	1.40	1.65	1.85	1.90
13.0			0.65	0.95	1.20	1.35	1.50
13.5			0.50	0.80	1.05	1.20	1.30
14.5				0.50	0.80	0.90	1.05
15.0					0.70	0.80	0.90
16.0					0.45	0.55	0.70
16.5						0.45	0.60
17.5							0.40



# Kato NK-250E-III

## Fly Jib Duties



Boom Angle (°)	With fully extended outriggers - Over side and over rear					
	31m boom + 8m Jib					
	Offset 5°		Offset 17°		Offset 30°	
	Working radius (m)	Load	Working radius (m)	Load	Working radius (m)	Load
80	8.00	2.75	8.80	1.95	10.20	1.35
76	10.50	2.75	11.50	1.95	13.00	1.35
71.5	11.00	2.65	12.00	1.90	13.50	1.35
70	14.60	2.07	15.70	1.53	16.80	1.15
65	17.70	1.73	18.80	1.32	19.60	1.02
60	20.60	1.50	21.70	1.15	22.30	0.90
54	23.80	1.28	24.80	1.00	25.40	0.80
50	25.70	0.94	26.60	0.90	27.30	0.75
48.5	26.40	0.84	27.30	0.80	27.90	0.73
44	28.30	0.62	29.10	0.60	29.80	0.58
40	30.00	0.48	30.60	0.45	31.20	0.44

Boom Angle (°)	With intermediately extended outriggers - 360° full range					
	With fully extended outriggers - over front					
	31m boom + 8m Jib					
	Offset 5°		Offset 17°		Offset 30°	
Working radius (m)	Load	Working radius (m)	Load	Working radius (m)	Load	
80	8.00	2.75	8.80	1.95	10.70	1.35
76	10.50	2.75	11.50	1.95	13.00	1.35
75.5	10.80	2.60	11.80	1.90	13.50	1.35
72	12.90	1.77	14.00	1.60	15.60	1.15
70	14.00	1.45	15.30	1.28	16.70	1.07
65	16.90	0.75	18.20	0.67	19.50	0.58
61	19.10	0.35	20.30	0.32	21.50	0.30